

About These Process Maps

Scope:

Objective:

- To document how the processes will look in the future, on implementation of the new ReSPECT form.

Assumptions

- Information provided by the service staff is assumed to be true and accurate.

Contents:

- ReS GP 001 – New Advance Care Plan
- ReS GP 002 – Patient has an existing Advance Care Plan
- ReS GP 003a – Patient has a ReSPECT form generated in LTHT (Administration process)
- ReS GP 003b – Patient has a ReSPECT form generated in LTHT

About Business Change Process Models

These process models illustrate segments of end-to-end business processes.

The models are designed to help the service understand how things are expected to work when the solution is deployed and to determine how it will support its local vision. They can be used to explore process re-design options, evaluate their robustness and to prepare for subsequent changes. They can also be used to inform project teams of the benefits achievable, of the implementation challenges and issues that may be encountered, and potential role/organisational changes that may be needed.

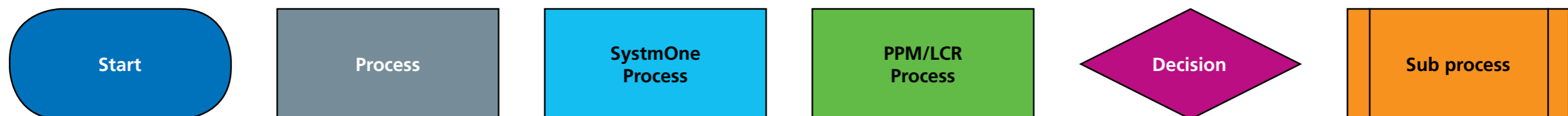
Format and availability of models

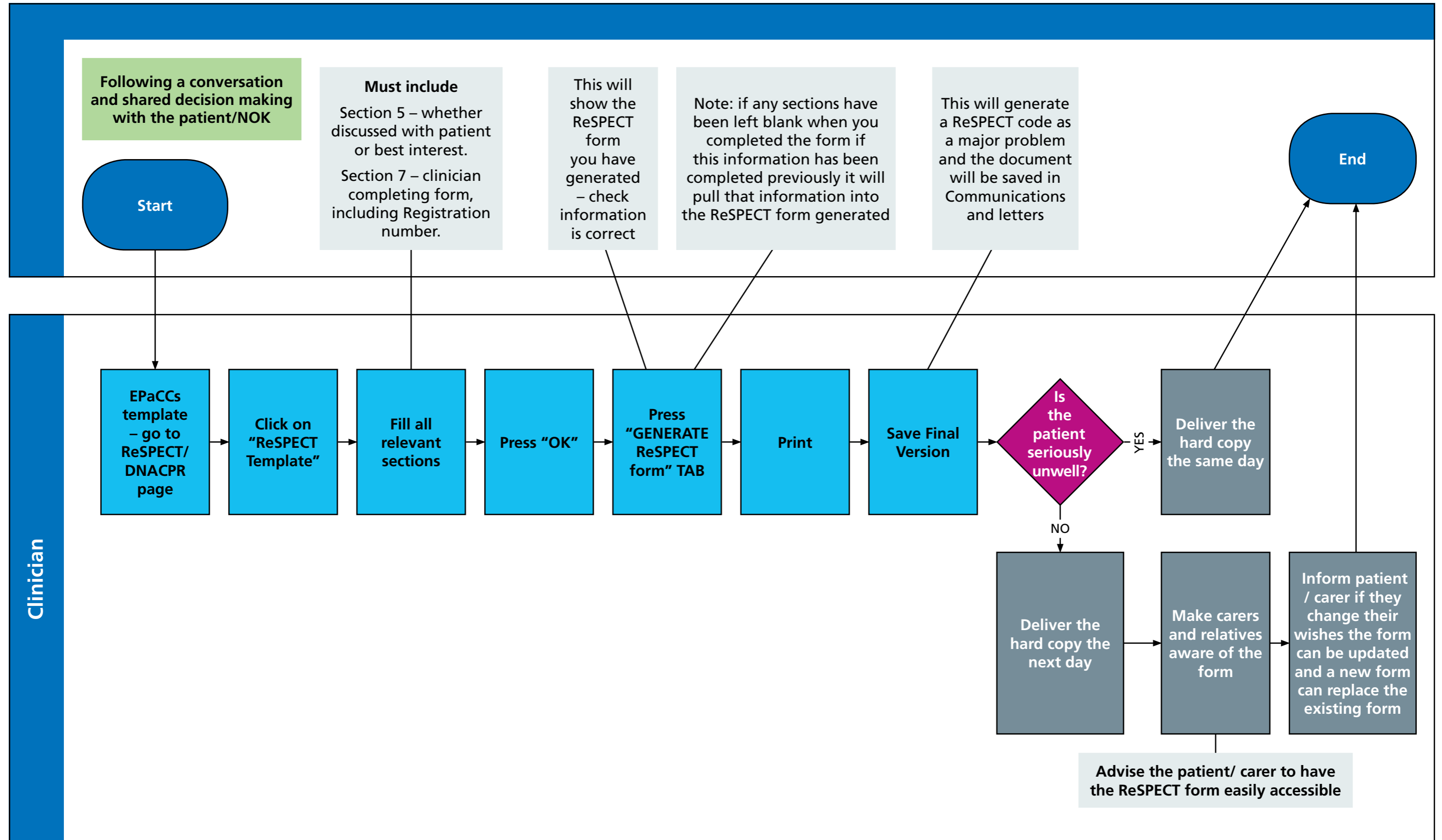
Each process map has been developed using Microsoft Visio and is available for use in native Visio format or rendered into Adobe PDF format.

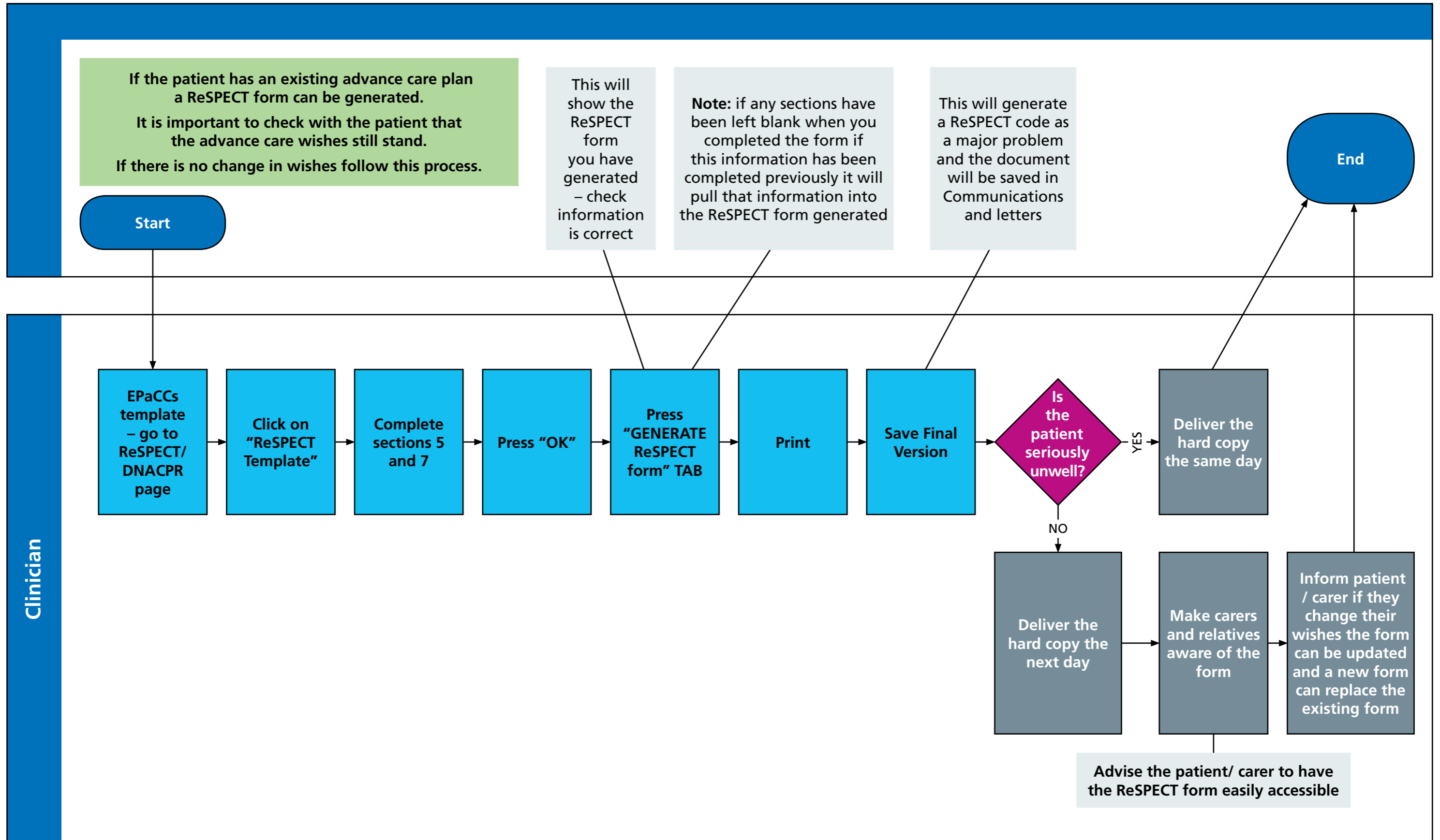
Amendment Record

Version	Status	Date	Author	Comments
0.1	Draft	02/04/2020	Ian Woodcock	Maps created using notes from GP
0.2	Amended Draft	03/04/2020	Sarah Taylor-Marshall	New map GP_003a Admin process created
0.3	Amended Draft	03/04/2020	Ian Woodcock	Minor amendments requested by GP in email (9:33 - 03/04/2020)

Document key:







ReS GP 003a - Patient has a ReSPECT form generated in LTHT (Admin Process)

